

# EXCAVATOR ZE230E



**ZOOMLION**

Zoomlion Heavy Industry Science & Technology Co.,Ltd.

Add:Zoomlion Overseas Building, No.613, 3rd Section, Furong Middle Road, Yuhua District, Changsha, Hunan, P.R.China 410205

Copyright © 2015 Zoomlion. All rights reserved. Reproduction and copying of any part of the Contents is not allowed for any purposes without Zoomlion's written approval.  
Note: No product coating appearance shall be subject to sample.



Printed in China VN-EM-EM-2016-01

**ZOOMLION**

## Features

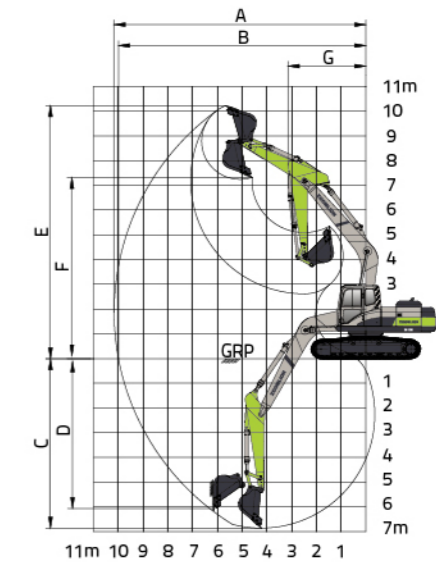
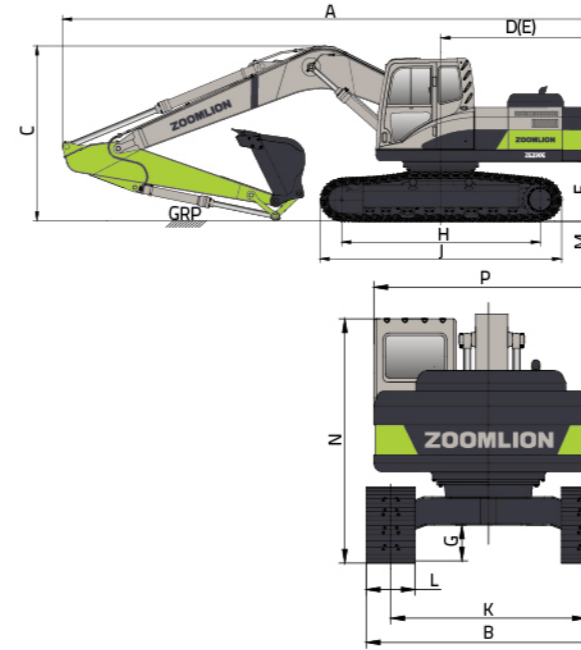
ZE230E series excavator is equipped with imported Cummins B5.9-C turbocharged engine, enjoying globally perfect after-sale service system, high reliability, long life, low fuel consumption and less noise. Even if working on the highland of 3000m above sea level, it can ensure that the rated output power remains unchanged. The newly designed hydraulic system makes the power of engine and main pump reach the optimal state. The flow of main pump can be automatically adjustable to realize the flow proportion control of actuators and reduce power loss of pump flow. Boasting fuel consumption reduction and high operation efficiency, it also enjoys optimum performance. The electronic control system is advanced and dashboard display is provided with standard configuration of interface with six languages, such as Chinese, English, French, Russian, Spanish, Portuguese, etc, to meet operating demands of different countries and regions. This series of excavator mainly features large range of excavating, long life of bucket, high carrying capacity of chassis, good stability, low fuel consumption, high working performance, better coordination and tenderness. In addition, earthwork bucket, rock bucket, enlarged bucket, shorter arm, extended boom and breaking hammer are available to meet different users' demands. This excavator is widely used in the medium-scale earthwork engineering, construction of roads and railways, house demolition as well as hydraulic engineering like excavation of riverways and brooks.

ZE230ELR (12.5m) excavator is equipped with extended boom and arm, widened track as well as advanced electrical system and hydraulic system. Its performance is stable and the excavating range is 12.5m.

ZE230ELR (15m) excavator is equipped with extended boom and arm, widened track as well as advanced electrical system and hydraulic system. Its performance is stable and the excavating range is 15m. This excavator is widely used in house demolition and hydraulic engineering like excavation of riverways and brooks.

ZE230E excavator for forest area is equipped with forest bucket, pulling and towing device, special protective device, special slewing platform, track frame protection device and sprocket support reinforcement device. It is suitable for working in forest exploitation areas.

ZE230E-9 excavator is equipped with Euro III electronic fuel injection engine, featuring strong power, less noise and low fuel consumption. Installed with advanced electrical system and hydraulic system, the machine boasts powerful digging force and fast operating speed to meet demands of different working conditions and operating environments.



## Technical Parameters

	Item	ZE230E	ZE230ELR(12.5m)	ZE230ELR(15m)	ZE230E(Forest)	ZE230E-9
Key technical parameters	Working mass(kg)	22800	23000	24300	25650	23000
	Rated power( kw /rpm)	133/2000	133/2000	133/2000	133/2000	145/2000
	Standard bucket capacity(SAE)( m <sup>3</sup> )	1.1	0.6	0.45	1.1	1.1
	System flow (Max. pressure/ Max. flow)	34.3 Mpa 2×220 L/min	34.3 Mpa 2×220 L/min	34.3 Mpa 2×220 L/min	34.3 Mpa 2×220 L/min	32.4/35.3 Mpa 2×218 L/min
	Engine model	Cummins B5.9-C(178hp)	Cummins B5.9-C(178hp)	Cummins B5.9-C(178hp)	Cummins B5.9-C(178hp)	Cummins QSB6.7(190hp)
	Max. torque(N.m/rpm)	708/1500	708/1500	708/1500	708/1500	931/1400
	Traveling speed (low/high)(km/h)	3.4/5.2	3.4/5.2	3.4/5.2	3.4/5.2	5.2/3.4
	Slewing speed (rpm)	11.3	11.3	11.3	11.3	11.3
	Gradeability <sup>o</sup>	35°	35°	35°	35°	35°
	Max. drawbar pull(kN)	195	195	195	195	195
	Digging force of bucket (ISO)(kN)	155	94	94	155	155
	Digging force of stick (ISO)(kN)	124	69	56.2	124	124

## Dimension And Operation Range

	Item	ZE230E	ZE230ELR (12.5m)	ZE230ELR (15m)	ZE230E (Forest)	ZE230E-9	
Basic technical parameters	A	Length( mm)	9755	10945	12270	10400	9810
	B	Width ( mm)	2990	3190	3390	3495	2990
	C	Height ( mm)	3190	3010	3205	3245	3330
	D	Slewing radius of tail ( mm)	2840	2840	2840	2970	2840
	E	Tail length( mm)	2800	2800	2800	3450	2800
	G	Counterweight ground clearance( mm)	1070	1050	1050	1080	1080
	H	Min. ground clearance( mm)	440	440	450	440	440
	I	Ground contact length( mm)	3660	3660	3840	3840	3660
	J	Track length( mm)	4450	4450	4640	4640	4460
	K	Track gauge( mm)	2390	2390	2590	2590	2390
M	Track shoe width( mm)	600	800	800	600	600	
P	Height (UP to the top of the cab) ( mm)	2960	2960	2960	3210	3045	
Q	Slewing table width( mm)	2720	2720	2720	3495	2720	
Operating range	A	Max. excavating radius( mm)	10180	12665	15170	10180	10180
	B	Max. excavating distance( mm)	10005	12525	15055	10005	10005
	C	Max. excavating height( mm)	10250	12360	14105	10250	10250
	D	Max. discharging height( mm)	7260	9890	11640	7260	7260
	E	Max. excavating depth( mm)	6860	8780	11240	6860	6860
	F	Max. vertical excavating depth( mm)	5980	—	—	5980	5980
	G	Min. slewing radius of front( mm)	3160	3655	4325	3160	3160